



The Black & Gold



of Sigma Nu Fraternity
at Theta Kappa Chapter

Sigma Nu Fraternity

October 5, 2014 - "Last Call D-5" for Homecoming RSVP Edition

Georgia Southern University

HOMECOMING 2014

OCTOBER 9-12 • UNIV. OF IDAHO

ΣNETT - THE 25TH ANNIVERSARY OF OUR HOUSE DEDICATION - ΣNETT

It's here –not too late to RSVP! The 2014 Homecoming celebration and 25th Anniversary of our House is here! It is **Thu., Oct. 9th thru Sun., Oct. 12th**, but you can **come for 1, 2, 3, 4 days or more!** The Re-Dedication is Saturday (10/11), but we have our Signature Welcome Reception and the Brody Johnson Band live at the House on Friday (10/10). RSVP today (it's not too late) at www.SigmaNuGSU.com/homecoming. **** This event is family friendly, so enjoy! ****

The Plan for the Weekend

Thursday – Oct. 9th

8:00 pm Welcome events at various locations. Dingus Magee's?

Friday – Oct. 10th

8:55 am Depart from/Consolidate rides from Tony's House
9:45 am Meet at Brazell's Creek Golf Course in Reidsville
10:00 am Golf at Brazell's Creek Golf Course in Reidsville
3:30 pm After Golf at Loco's (for those interested)
6:00 pm **Welcome Reception at the Millhouse Steak House**
Dinner is available, full bar, and Welcome Packet will be provided
9:30 pm **Party at the House – "The Brody Johnson Band"**
Featuring Todd (305) & Scott (326) Smith with the rest of the band
Band starts at 10:00 pm (until) – the hottest party at GSU!

Saturday – Oct. 11th

10:00 am Annual Alumni Meeting at the Theta Kappa House
11:15 am **25th Anniversary House Re-Dedication Ceremony**
1:00 pm Tailgate Lunch at the House (by Babe's BBQ)
2:00 pm Game Day and Tailgate at the House & other spots
2:30 pm GSU Tailgate Party featuring the Brody Johnson Band
6:00 pm **GSU Eagles (4-2) vs. University of Idaho (0-5)**

*With an 11:15 ceremony and a 6:00 pm game **anyone** can come to GSU on Saturday, return home that night, and have a great day of fun!*

The date is here & now! It is not too late to RSVP, so go to: www.SigmaNuGSU.com/homecoming and visit our Facebook at: <https://www.facebook.com/groups/sigmanuGSU/> for up to the moment and last minute updates on this very big weekend!

Philanthropy – the 2014 MS Benefit...

On page 4 see the kick-off of our 2014 Multiple Sclerosis Benefit – now a 3 year tradition and our leading philanthropic activity at SigmaNuGSU.

5 DAYS UNTIL HOMECOMING

25TH ANNIVERSARY OF OUR HOUSE

ΣNETT • ΣNETT • ΣNETT

Homecoming 2014 is October 9-12 • Come for 1, 2, 3, 4 days or more!

On Saturday our 25th House Anniversary, Re-Dedication, & Tailgate Party.

Meeting: 10:00a • Re-Dedication: 11:15a • Lunch: 1:00p • Game: 6:00p

Plus ...

The Brody Johnson Band live at the Sigma Nu House • Fri., Oct. 10th at 10:00 pm
starts after the Welcome Reception at the Millhouse at 6:00 pm on Friday



Featuring Todd Smith (ΘK 305), Scott Smith (ΘK 326), and the rest of the band plus guest Mark Cunningham (ΘK 277). Come out for the hottest event at GSU!

RSVP at www.SigmaNuGSU.com/homecoming.

Meet the Fall 2014 Candidate Class...

On pages 5-6 meet the candidates, plus find out their hometown and high schools – meet the future of Theta Kappa here & at Homecoming 2014.

Search for the Facebook Group: [Sigma Nu - Georgia Southern - Theta Kappa](#) or [SigmaNuGSU](#) - Join the Facebook Group & Website!

THE BLACK & GOLD

READ THE "EXTRA NEWS" THAT WE COULD NOT FIT IN

THE NEWSLETTER FROM THE THETA KAPPA CHAPTER, SIGMA NU FRATERNITY ~ SINCE THE FALL OF 1981

Attached is the "Last Call **D-5**" Newsletter for Homecoming 2014, so please read it and distribute to your brothers and friends. The current chapter newsletter is always at: www.SigmaNuGSU.com/newsletter

We are excited this year: for the first time Homecoming could be a "day trip" for many especially those in Atlanta or within 250 miles. With an 11:15 am ceremony and a 6:00 pm game anyone can come to GSU on Saturday, return home that night, and have a great day of fun! **RSVP today!**

1. **Homecoming 2014.** Saturday, Oct. 11th is Homecoming '14 (weekend of Oct. 9-12) and preparations are near complete by both the alumni and collegiate chapters. This will be a very special event and year for us including the 25th Anniversary of our Chapter Home and Re-Dedication of the House! It is in just 5 days – still time to RSVP! With an 11:15 am ceremony and a 6:00 pm game anyone can come to GSU on Saturday and return home that night!

GSU is 4-2 (3-0 in conference) and plays against University of Idaho (0-5). GSU is coming off some big victories and several heartbreakers (Tech & NC State), but has firmly established themselves in Division 1 Football and the Sunbelt Conf. www.SigmaNuGSU.com/homecoming

2. **Homecoming GOLF.** On Fri., Oct. 10th we will hold our 29th annual golf outing. If you are interested in golf at Homecoming, please let us know by completing a RSVP. This year due to an unforeseen conflict (a very large memorial golf tournament at FHCC), we have moved golf to Brazell's Creek Golf Course in Reidsville. Alumnus Jim McBrayer (ΘK 5) assures us of a most excellent time. Start time is 10:00 am, so you can meet us there at 9:45 am (pay on site at clubhouse) or you can meet at Tony

Fair's house at 8:55 am to catch a ride or caravan to the golf club. For more info you can reach Jim at: 404-625-3423 (M) or jmcbrayer@comcast.net, but after Tuesday night please only contact him via mobile. We hope to be back at FHCC next year.

3. **END MS 2104.** Please read the enclosed letter about our Chapter's 2014 END MS (Multiple Sclerosis) Benefit Concert. If you have the means, please consider a donation to this very worthy cause. See Page 4. www.SigmaNuGSU.com/end-ms-benefit

4. **Fall 2014 Candidates.** Meet the future of our chapter – see enclosed sheet on our newest candidate class or at Homecoming. www.SigmaNuGSU.com/candidates

5. **Alumni Updates.** Please update your alumni records and fill out an alumni update for then return to us. We will forward updates to the General Fraternity in Lexington, VA as well. The form is now available as an Electronic PDF Form that updates our database securely – this is a new feature, so give it a try! www.SigmaNuGSU.com/alumniupdate

6. **I Got Mine!** Please acknowledge this newsletter (we need to know who we are reaching) and fill out the short survey. If you did this since January 1 you don't need to again, but you may if you want to. If you fill out an update there is no need to. www.SigmaNuGSU.com/i-got-mine.

7. **Conduct Expectations.** Please read the enclosed "Conduct Expectations" letter. We are just trying to be transparent. You can always get these and other policies at: www.SigmaNuGSU.com/policies



Theta Kappa Extra News

SOME MORE:

ALUMNI ADVISORY BOARD

=====

We are always looking for new Alumni Advisory Board members and we would welcome your participation, so please consider and sign-up for more information on this very important role! Just like rush we must continuously recruit for advisors.

If you are looking for a way to make an impact on our chapter, please take a look at possibility of becoming an “Advisor” – it does not take as much time as you think and we have a variety of roles for a variety of skills and time available.

You can volunteer with Theta Kappa or closer to home with another chapter, but over 50% of our board members are 100 miles or more from Statesboro. You must complete online training, a risk reduction class, and sign an Alumni Code of Conduct in order to participate. For more info go to:

www.SigmaNuGSU.com/alumni-advisors

ALUMNI MENTOR PROGRAM

=====

We are still looking for Alumni Mentors for the chapter, so please sign-up for this important role! If you are looking for a way to make an impact on our young men, but can't travel to Statesboro or be an advisory team member, please take a look at possibility of becoming an “Alumni Mentor” (Alumni Big Brother) at Theta Kappa. You must complete an online risk reduction class plus sign an Alumni Code of Conduct in order to participate. For more information please go to:

www.SigmaNuGSU.com/alumni-mentor

HOW CAN I HELP THETA KAPPA?

=====

It is not all financial – there is more! How can I help? How can I get involved? These are questions we get asked a lot by alumni and parents. It is simple as we are always looking for volunteers. We have created a page with suggestion of some high impact

ways you can help without living in Statesboro. If you are too far away from GSU then there are other chapters looking for assistance. Please go to:

www.SigmaNuGSU.com/get-involved

OFFICERS FOR 2013-14

=====

Congratulations and best wishes to the new Theta Kappa Officers. They are:

- Eric D. Degen (ΘK 811, Commander*)
- CJ Deputy (ΘK 797, Lt. Commander*)
- Carlos Robelo (ΘK 758, Treasurer*)
- Adam Clay (ΘK 810, Marshal*)
- Michael Vega (ΘK 782, Recruitment Officer*)
- Nick Efird (ΘK 819, LEAD Officer*)
- Jon Gilbert (ΘK 819, Sentinel*)
- Josh Calhoun (ΘK 804, Recorder)
- Anderson Johnson (ΘK 798, Chaplain)
- Brandon Entekin (ΘK 811, Social Chairman)

◦ (*Indicates Chapter Council.)

www.SigmaNuGSU.com/officers

SOME THOUGHTS:

=====

Pass this on to your spouse, fellow brothers, parents, and friends of Theta Kappa just in case they have not seen it yet – not everyone does – don't assume. They may all join our website and Facebook site. We add several alumni and friends each time we send out an email or a newsletter, so don't assume all of your brothers are getting this email.

Encourage them to join us at an event, join our sites, or subscribe to our emails and newsletters.

ΣNETT!

Thank you and warmest regards,

The Theta Kappa Collegiate Chapter,
House Corporation, Alumni Chapter,
and Alumni Advisory Board





Sigma Nu Fraternity • Theta Kappa Chapter • Georgia Southern University
103 Olympic Boulevard • Statesboro, GA 30458 • www.SigmaNuGSU.com



Help find a cure for MS by supporting the 3rd Annual ΣND MS Benefit Concert!

The Brothers of Sigma Nu-Theta Kappa (Georgia Southern University) would like to invite you to the 3rd Annual ΣND MS Benefit Concert. The event will take place at our chapter house on Tuesday, October 21st from 6-8 p.m. Our address is 103 Olympic Boulevard, Statesboro, GA 30458. Please join us!

The money that we raise for the National Multiple Sclerosis Society will be used to find the cause, treatment, and the cure of multiple sclerosis. The money is also used to provide education, information, direct financial support, and scholarships to individuals and families living with MS. Over the past two years, we have donated over \$12,000 for this worthy cause. Our goal for the third edition of the ΣND MS Benefit Concert is to raise over \$10,000 dollars for the National Multiple Sclerosis Society in hopes of finding a cure for this horrible disease, but we can't do it without YOUR help! **Donations are 100% tax deductible**, and no donation is too small!

This year we have streamlined the donation process and you can now donate directly through our event's online giving page on the National Multiple Sclerosis Society's official website. More in depth information on our event is available on the online giving page. **If you would like to make a donation, you can do so here:** www.SigmaNuGSU.com/donate-to-end-ms (it will link you to a secure National MS site). Making a donation is quick and easy. All you have to do click the "Donate" button and follow the instructions to make an online donation. If writing a check sounds like a better idea, please make the check out to "The National Multiple Sclerosis Society" and send it to the address listed below. Here's to another year of this great event! Go Eagles!

Mailing Address

Office of Fraternity & Sorority Life
P.O. Box 8097
Statesboro, GA 30460-8097
C/O Sigma Nu-Theta Kappa

Contact Information

ΣND MS Event Chairman
Brian Griffin
Phone: (229) 402-1615
Email: briandgriff@gmail.com

ΣND
MS 2014

MS **WE JOINED
THE MOVEMENT**

www.SigmaNuGSU.com/

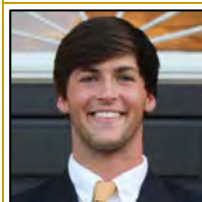
Thank you!



Sigma Nu Fraternity • Theta Kappa Chapter • Georgia Southern University
 103 Olympic Boulevard • Statesboro, GA 30458 • www.SigmaNuGSU.com

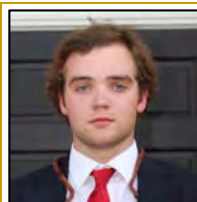


The Sigma Nu – Theta Kappa Fall 2014 Candidate Class



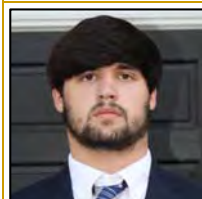
Zach Byrne

Freshman
 Macon, GA
 Mount de Sales Academy
Class President



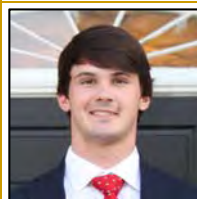
Haden Farr

Freshman
 Newnan, GA
 Newnan High School
Class Recorder



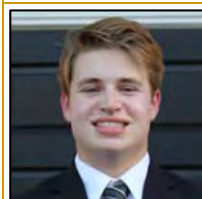
Cody Doolittle

Freshman
 Macon, GA
 Howard High School
Class Vice President



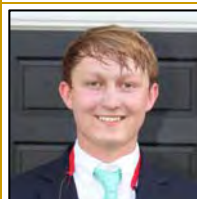
Davis Nims

Freshman
 Dunwoody, GA
 Dunwoody High School
Class Philanthropy & Social Chair



Eric Nelson

Freshman
 Alpharetta, GA
 Alpharetta High School
Class Treasurer



Ian Carnahan

Freshman
 Thomasville, GA
 Thomas County Central High School



Sigma Nu Fraternity • Theta Kappa Chapter • Georgia Southern University
 103 Olympic Boulevard • Statesboro, GA 30458 • www.SigmaNuGSU.com



	Michael Kennedy Freshman Mableton, GA Sprayberry High School		Alex Rickman Freshman Rome, GA Pepperell High School
	RJ Knecht Freshman Canton, GA Creekview High School		Ian Smith Freshman Kennesaw, GA Allatoona High School
	Mitchell Koger Sophomore Canton, GA Sequoyah High School		Gaines Swanson Freshman Canton, GA Creekview High School
	Nick Mayville Freshman Alpharetta, GA Chattahoochee High School		Joe Taylor Freshman Acworth, GA Allatoona High School
	Austin Meaut Freshman Marietta, GA Carlton J. Kell High School		Davis Townsend Sophomore Odum, GA Wayne County High School
	Hunter Mendenhall Freshman Acworth, GA Harrison High School		Jared Williams Sophomore Thomson, GA Thomson High School
	Jake Morgan Freshman Newnan, GA Newnan High School		Tyler Winslow Freshman Duluth, GA Buford High School
	Marshall Richards Freshman Canton, GA Creekview High School	<ol style="list-style-type: none"> 1. HONOR. To govern each act by a high sense of honor 2. FRIENDSHIP. To bind together all members by ties of true and lasting friendship. 3. ASSISTANCE. To protect, assist, advance, and encourage each other by every honorable means 4. UNITY. To have plans for guidance and unity in action 5. COMMUNICATION. To gather, to propose, discuss and agree upon these plans at meetings <p><i>No Hazing! – LEAD: Leadership • Ethics • Achievement • Development</i></p>	

Building the future of the Theta Kappa Chapter

5 DAYS UNTIL HOMECOMING

25TH ANNIVERSARY OF OUR HOUSE

ΣNETT • ΣNETT • ΣNETT

Homecoming 2014 is October 9-12 • Come for 1, 2, 3, 4 days or more!

On Saturday our 25th House Anniversary, Re-Dedication, & Tailgate Party.

Meeting: 10:00a • Re-Dedication: 11:15a • Lunch: 1:00p • Game: 6:00p

Plus ...

**The Brody Johnson Band live at the Sigma Nu House • Fri., Oct. 10th at 10:00 pm
starts after the Welcome Reception at the Millhouse at 6:00 pm on Friday**



Featuring Todd Smith (ΘK 305), Scott Smith (ΘK 326), and the rest of the band plus guest Mark Cunningham (ΘK 277). Come out for the hottest event at GSU!

RSVP at www.SigmaNuGSU.com/homecoming.

5 Days & counting! Please RSVP today at: www.SigmaNuGSU.com/homecoming. There is still time and still rooms (we hear). With an 11:15 am ceremony and a 6:00 pm game just about anyone can come to GSU on Saturday, return home that night, and have a great day of fun! You can come for 1, 2, 3, 4 days or more – it could be just a “day trip”. We hope to see you!

Come out for the hottest event at GSU!



Sigma Nu Fraternity • Theta Kappa Alumni Advisory Board (AAB) • Georgia Southern University
PO Box 1697 • Statesboro, GA 30459-1697 • www.SigmaNuGSU.com • aab@SigmaNuGSU.com



MEMO

DATE: July 1, 2014

FROM: Theta Kappa House Corporation, Theta Kappa Alumni Chapter, and the Theta Kappa Alumni Advisory Board (AAB)/Alumni Board of Receivers (ABR)

TO: Theta Kappa Alumni, Brothers, Parents, Friends, Guests, and Visitors

SUBJECT: Conduct Expectations at the Theta Kappa Chapter House, Property, and Events

This is a notice that all alumni, brothers, parents, family, friends, guests, and visitors of the Theta Kappa Chapter are expected to abide by the Sigma Nu Code of Conduct at all times (enclosed) and by the Sigma Nu Fraternity Risk Reduction Policy and other like policies when participating in fraternal events or events at the Chapter Home or other fraternal properties. The code is fairly simple (listed below) and just requires one to abide the laws and use good judgment. These policies apply to all alumni, brothers, candidates, parents, family, friends, guests and visitors even if you are legal drinking age and consuming alcohol legally. This policy also applies to the use of illegal drugs, but there is no time limit on that. All of this should be common sense to us and is a restatement of policy.

If you have questions, please feel free to contact the Commander, a member of the House Corporation, an Alumni Chapter Officer, or a member of the Alumni Advisory Board. All of their contact information can be located on the chapter website at: <http://www.SigmaNuGSU.com>. The fraternity and chapter policies as well as links to their contact information are located at <http://www.SigmaNuGSU.com/policies>. Alumnus John B. Austin, OK 120, who is an attorney as well as our Risk Reduction & Legal Advisor, is able to answer any questions in regards to this policy.

A digest of the Sigma Nu Code of Conduct:

"I promise on my Honor as a Knight and a Gentleman (if a Sigma Nu), do solemnly swear to abide by and uphold The Law of Sigma Nu Fraternity, Inc., the Risk Reduction Policy and Guidelines, The Ritual, the chapter bylaws, and the directives of the Grand and General Officers of the Fraternity. Further, I will:

- 1. Respect the dignity of all persons; therefore, I will not physically, psychologically or sexually abuse or haze any human being.*
- 2. Protect the health and safety of all human beings.*
- 3. Respect my property and the property of others; therefore, I will neither abuse nor tolerate the abuse of property.*
- 4. Meet my financial obligations in accordance with The Law of Sigma Nu Fraternity, Inc.*
- 5. Neither use nor support the use of illegal drugs; I will neither abuse nor support the abuse of alcohol.*
- 6. Fully support Sigma Nu Fraternity Inc.'s Risk Reduction Policy and Guidelines.*
- 7. Acknowledge that a clean and attractive environment is essential to both physical and mental health; therefore I will do all within my power to see that the chapter's property is well maintained and cleaned.*
- 8. Confront all of my Fraternity Brothers who violate these fundamental obligations and promise to report violations to the appropriate officers of the Fraternity.*
- 9. Abide by the rules and policies of Georgia Southern University.*

I am committed to the ideals of Sigma Nu Fraternity, and I fully realize and understand that my continued association and membership in the Theta Kappa Chapter depends upon my deeds. I also realize that my own violations of the principles, ideals, and this agreement will subject me to suspension and/or expulsion from the Theta Kappa Chapter of Sigma Nu Fraternity."

Your adherence, support, and enforcement of this policy is greatly appreciated, but is also required.