



**Sigma Nu Fraternity • Theta Kappa Chapter • Georgia Southern University**  
103 Olympic Boulevard • PO Box 1697 • Statesboro, GA 30459-1697 • [www.SigmaNuGSU.com](http://www.SigmaNuGSU.com)



May 13, 2014

Alumni, Collegiate, Parents, and Friends...

Here is our most recent newsletter and additional updates – starting with: Alumnus David Whitlaw (ΘK 372) shared the upcoming “Coaches’ Caravan” event and challenges everyone in the area to attend. It is the 2014 GSU “Coaches’ Caravan - Atlanta Gwinnett” on Friday, May 16th at 7:00 pm at the Eagle Rock Beer Distributing Company (6205 Best Friend Rd, Norcross, GA 30071 – 770.498.5500 ) near I-85 Exit 99 Jimmy Carter Blvd/GA 140. Register at [www.EagleRocks.com](http://www.EagleRocks.com). Meet GSU’s new Coach, find out what is going on at GSU, and see your brothers (spouses welcome). For more information on this go to: [www.SigmaNuGSU.com/coaches-caravan](http://www.SigmaNuGSU.com/coaches-caravan). We posted it to Facebook and have included it in this email along with other updates on your chapter including a recap of the “Road to the Rock” pilgrimage, the recent 2014 Commanders’ Dinner, and other updates!

Theta Kappa has had a great 2013-14 school year and I want to tell/show you about some of it in the attached newsletter, but also invite you to review and subscribe to our website and Facebook group – we will be sending some more updates to you over the summer. I want to start by thanking our most generous patrons who underwrote our recent “Road to the Rock” trip – they are listed and recognized on Page 3. Without your support, this trip would not have been possible in the fashion it was done, so we created a very special commemorative t-shirt for each of you, which you will get in the next few weeks. Over \$7,000 was raised, which covered the trip and funded several incoming freshman “Rush” scholarships for this summer. Also thank you to brothers Anderson Johnson (ΘK 798) and Adam Clay (ΘK 810) for putting the trip together, Carlos Robelo (ΘK 758) for the great pictures of the trip, and Headquarters Staff Members Alex Taylor (NB 5), Chris Brenton (BT 1307), and the entire staff for helping us organize it as well as leading the tours and facilitating LEAD there. For more on the trip: [www.SigmaNuGSU.com/trip-to-lexington](http://www.SigmaNuGSU.com/trip-to-lexington) or: [www.SigmaNuGSU.com/rtrr-slideshow](http://www.SigmaNuGSU.com/rtrr-slideshow).

Congratulations to our eight new brothers (and their parents), who joined the Legion of Honor at Knights during our “Road to the Rock” trip on Sat., April 12, 2014. They are:

1. John B. Harrison (John), ΘK 833, Roswell GA
2. Bryan N. Taylor (Bryan), ΘK 834, Alpharetta GA
3. Mitchell G. Portwood (Grant), ΘK 835, Roswell GA
4. John E. Gee (John), ΘK 836, Jefferson GA
5. Taylor A. Harris (Taylor), ΘK 837, Alpharetta GA
6. Ryan M. Wendt (Ryan), ΘK 838, Kennesaw GA
7. Dylan Holloway (Dylan), ΘK 839, Tifton GA
8. Nicholas Masters (Nick), ΘK 840, Woodstock GA

If you know a young man who is coming to GSU in the fall (or another college for that matter), we would love to hear from you, so we can speak to them and recruit them. Go to: [www.SigmaNuGSU.com/membership-referral](http://www.SigmaNuGSU.com/membership-referral) to provide us their information.

Lastly, I want to thank the Alumni Advisory Board, the House Corporation, each of you, and the brothers of the chapter for supporting and believing in your chapter this year as we became the “New Theta Chapter” – we would not have gotten here without you – we are your chapter and we need each of you! We promise and vow to all be honorable knights of Sigma Nu, strive to be great young men, and be transparent in our operations! Thank you for your trust and support.

We look forwards to a great fall and seeing each of you at GSU Football Games, the match-up between Georgia Tech and our GSU Eagles on Sat., Sep. 13<sup>th</sup> in Atlanta (we are planning a Sigma Nu tailgate), at Homecoming Weekend on Oct. 9-12, and in-between. See our upcoming calendar in the “Commander’s Dinner” section on Page 15. For more information on Homecoming, please go to: [www.SigmaNuGSU.com/homecoming](http://www.SigmaNuGSU.com/homecoming). If you have questions, please feel free to contact me at: 770-876-9259 (C) or email: [degen555@hotmail.com](mailto:degen555@hotmail.com).

ΣNETT!

Fraternally,

Eric D. Degen, ΘK 811  
Commander



# The Black & Gold



of Sigma Nu Fraternity  
at Theta Kappa Chapter

Sigma Nu Fraternity

May 9, 2014 - Coaches' Caravan Spring Edition

Georgia Southern University

## COACHES' CARAVAN

MEET THE NEW COACH, CATCH UP ON GSU, & SEE BROTHERS

EAGLE ROCK DISTRIBUTING CO. (NORCROSS) – FRI., MAY 16<sup>TH</sup> AT 7PM

### 2014 COACHES CARAVAN

April 22 - Emanuel County  
April 24 - Effingham County  
April 25 - Savannah  
April 29 - Dublin  
May 1 - Macon  
May 2 - Augusta  
May 6 - Evans County  
May 8 - Jacksonville  
May 15 - Atlanta - Midtown  
May 16 - Atlanta - Gwinnett



### ATLANTA AREA

Date: **Fri., May 16<sup>th</sup>**

Time: **7:00 pm – 9:00 pm**

Place: **Eagle Rock Distributing**

6205 Best Friend Rd

Norcross, GA 30071

770-498-5500



Hosts:

John Austin, ΘK 120

Tom Harjung, ΘK 248

Ed Hurst, ΘK 280

Jim McBrayer, ΘK 5

David Whitlaw, ΘK 372

Who: **All Alumni; Spouses welcome!**

For more information on local events go to: [SigmaNuGSU.com/local-area-events](http://SigmaNuGSU.com/local-area-events) or our [events site on Facebook](#).

This a GSU Athletics event that we are riding on the “coat tails” of, but a great turn-out would be a strong statement and fun! For our events, we are always looking for suggestions on venues, additional hosts, dates/times, and whatever ideas you may have – we would like to keep this initiative moving! If you have thoughts, please let us know.

## HOMECOMING 2014

OCTOBER 9-12 • UNIV. OF IDAHO

ΣNETT – THE 25<sup>TH</sup> ANNIVERSARY OF OUR HOUSE DEDICATION – ΣNETT

**Save the date!** Our 2014 Homecoming Celebration is **October 9-12, 2014!** Our own GSU Eagles will be playing University of Idaho on **Sat., Oct. 11<sup>th</sup>**. This year is the 25<sup>th</sup> Anniversary of Chapter House & its Rededication!

For more information go to: [SigmaNuGSU.com/homecoming](http://SigmaNuGSU.com/homecoming) or our [event site on Facebook](#).

Search for the Facebook Group: [Sigma Nu - Georgia Southern - Theta Kappa](#) or [SigmaNuGSU](#) – Join the Facebook Group & Website!





# **“Road to the Rock” Report**

**Our most generous patrons that supported the trip:**

Anonymous

John Austin, ΘK 120  
Buddy Banks, ΘK 67  
Martin Bay, ΘK 120  
Troy Barrentine, ΘK 275  
Larry Brady, ΘK 17  
John Dowdle, ΘK 399  
Tony Fair, ΘK 9  
Roy Fowler, ΘK 268  
Steve Garner, ΘK 116  
Bill Geddy, ΘK 219  
Bill Griffin, ΘK 25  
Bruce Groberg, ΔA 722  
Billy Hickman, ΘK 62  
Adam Hill, ΘK 193  
Marsha Holloway, Parent  
Andrew Hundley, ΘK 108  
Ed Hurst, ΘK 280  
Jeff Kinlaw, ΘK 282  
Jon Lott, ΘK 92

Jim McBrayer, ΘK 5  
Scott Mobley, ΘK 710  
Joe Molmer, ΘK 338  
Clint Murphy, ΘK 448  
Brent Myers, ΘK 295  
Andy Oliver, ΘK 231  
Mitch Portwood, Parent  
Denny Runnion, ΘK 379  
Larry Sands, ΘK 325  
Jack Stegall, ΘK 33  
Andrea Wendt, Parent  
Marty Williams, ΘK 114

Braswell Foods, Inc.  
SERVPRO of East Carolina  
SERVPRO of Statesboro  
Spring 2104 Candidate Class  
T-Shirt sales to alumni  
Theta Kappa House Corporation

Note: The list above made contributions to underwrite the “Road to the Rock” trip and does not include fundraising t-shirt sales.

For more information go to: [www.SigmaNuGSU.com/trip-to-lexington](http://www.SigmaNuGSU.com/trip-to-lexington)

# **My perspective and report on our “Road to the Rock” Trip**

**Eric D. Degen, ΘK 811, Commander**



First, thank you to all of our great supporters who made the trip possible! You helped make our Theta Kappa Chapter “Road to the Rock” trip the success it was! On Friday, April 11th, 27 brothers and 8 well-deserving candidates left the Sigma Nu house at 3 pm on a chartered bus bound for Lexington. Ten hours later, we arrived at the Carriage House. (Interestingly, it only took us 9 ½ hours to get back.)

Luckily, the bus had a DVD player, so we watched movies much of the way, which helped the 10 hours go by a little faster. The bus ride was a great time of bonding with each other and improving the brotherhood within the chapter. We arrived at the Carriage House (a bunkhouse for collegiates on the grounds) about midnight and found it could sleep all 35 members quite comfortably.

We woke up at 9 am the next morning and started the day off with a tour of Sigma Nu Headquarters Shrine. Alex Taylor, a member of the staff, was our tour guide, and he took us around both the buildings and the grounds of the Headquarters. This was the first time that over 90% of the chapter had visited our Headquarters. Located at the highest point in Lexington, VA, the facility provides an elegant and beautiful snapshot of the historical city. After we toured the grounds and building, Alex led a wonderful LEAD session on the SWOT analysis program and another session on accountability. Upon completion of the LEAD sessions we had a nice hour break for lunch. We found several good restaurants within walking distance of the Carriage House as well as a general store/gas station. As you could imagine, it is very hard to feed 35 college-aged men, but these local restaurants made it easy to accommodate us.

Once fed, several members found footballs, Frisbees, and other outdoor sports equipment. And so we relaxed and threw a football with our best friends. When our break was over, Chris Brenton, another staff member, led us on a walking tour through the beautiful town of Lexington. We visited Washington and Lee University and on to Virginia Military Institute. At VMI, we made several stops that revealed the historic significance of Sigma Nu at VMI. We saw where the original “Rock” was, as well as where our three founders stayed while they attended VMI. We then went to the VMI museum, which has enough military history to be in a national museum. We concluded the tour and made our way back through downtown Lexington, and returned to the Carriage House.

Around 5:30, we started to get ready for the initiation of our eight Spring 2014 candidates. We initiated these men in the Alpha Room at the Headquarters, which is decorated like the first chapter room at VMI. Our initiation ceremony lasted about an hour and was the best ceremony the Theta Kappa Chapter may have ever been a part of. When the ceremony was over, we all headed back to the Carriage house, changed, and went out to enjoy the rest of the night with our new brothers. Then, we had free time until we went to sleep that night. On the Sunday morning, we woke up around 6 am and prepared for our departure from Lexington, VA. We then got on the bus, watched more movies, bonded even more tightly with our brothers and arrived back in Statesboro around 4 pm.

## **Main Points of the “Road to the Rock” Trip:**

- Brotherhood and bonding on the bus trip and at the Carriage House
- First trip for the “New” Theta Kappa Chapter as a whole
- Chapter seeing HQs, VMI, W&L and Downtown Historic Lexington
- Visitation and honoring the Memorial Flag Pavilion and the “Pathway to Honor”
- Two great LEAD sessions led by the Fraternity Staff
- Initiation of Candidates in the Sigma Nu “Alpha Room” (ΘK 833 - ΘK 840)

If you have not been recently I encourage each of to take your own pilgrimage to our headquarters!



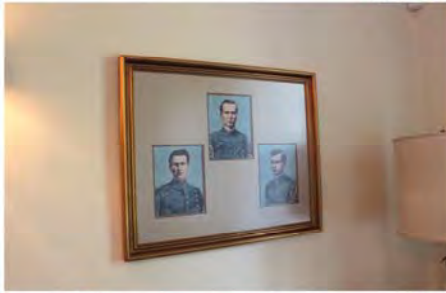














# **“Commanders’ Dinner”**

**The attendees of this very special event**

**Inaugural – Sat., Oct. 19, 2013**  
for Evan P. Winebarger, ΘK 754

**Second – Sat., Apr. 26, 2014**  
for Eric D. Degen, ΘK 811

#11: John B. Austin (John) – ΘK 120  
Commander: 1977-1978, (Atlanta GA)

#12: Philip C. Holley (Phil) – ΘK 131  
Commander: 1978-1979, (Norcross GA)

#14: Jimmie D. Walker, Jr. (Jim) – ΘK 150  
Commander: 1980-1982, (Roswell GA)

#19: William B. Geddy (Bill) – ΘK 219  
Commander: 1985-1988, (Macon GA)

#22: Jeffery Kinlaw (Jeff) – ΘK 282  
Commander: 1989-1990, (Savannah GA)

#33: David W. Pittman (David) – ΘK 528  
Commander: 2001-2002, (Dublin GA)

#41: James S. Mobley (Scott) – ΘK 710  
Commander: 2010-2011, (Athens GA)

#43: Evan P. Winebarger (Evan) – ΘK 754  
Commander: 2013-2013, (Lilburn GA)

Anthony B. Fair (Tony) – ΘK 9  
Advisor: 1984-2013, (Statesboro GA)

#11: John B. Austin (John) – ΘK 120  
Commander: 1977-1978, (Atlanta GA)

#14: Jimmie D. Walker, Jr. (Jim) – ΘK 150  
Commander: 1980-1982, (Roswell GA)

#19: William B. Geddy (Bill) – ΘK 219  
Commander: 1985-1988, (Macon GA)

#22: Jeffery Kinlaw (Jeff) – ΘK 282  
Commander: 1989-1990, (Savannah GA)

#43: Evan P. Winebarger (Evan) – ΘK 754  
Commander: 2013-2013, (Lilburn GA)

#44: Eric D. Degen (Eric) – ΘK 811  
Commander: 2013-2014, (Canton GA)

Anthony B. Fair (Tony) – ΘK 9  
Advisor: 1984-2014, (Statesboro GA)

William H. Griffin, Jr. (Bill) – ΘK 25  
House Corporation: 1986-2014, (Statesboro GA)

For more information go to: [www.SigmaNuGSU.com/commanders-dinner](http://www.SigmaNuGSU.com/commanders-dinner)





# **Sigma Nu Fraternity**

**Theta Kappa Chapter  
Georgia Southern University**

**Our Second Annual**

## **Commanders' Dinner**

**to honor our 44th & newest Eminent Commander  
Sat., April 16, 2014**

# **Eric D. Degen**

**ΘK 811, Sophomore, Canton, GA**





**Sigma Nu Fraternity – Theta Kappa Chapter (#171)  
2014 Commander Dinner at Bones Atlanta (Buckhead)**



**Saturday, April 26, 2014**





**Sigma Nu Fraternity – Theta Kappa Chapter (#171)**  
**2014 Commander Dinner at Bones Atlanta (Buckhead)**



**Saturday, April 26, 2014**





**Sigma Nu Fraternity – Theta Kappa Chapter (#171)**  
**2013 Commander Dinner at Bones Atlanta (Buckhead)**



---

**Saturday, October 19, 2013**

---





**Sigma Nu Fraternity – Theta Kappa Chapter (#171)**  
**2013 Commander Dinner at Bones Atlanta (Buckhead)**



**Saturday, October 19, 2013**



# **The Theta Kappa Second Annual Commanders' Dinner**

**Purpose:** To meet annually upon the election of the newest commander at Theta Kappa to welcome the new commander, convey the wisdom of our experience, our passion for leadership, our willingness to support and mentor him, the need to protect the brand and name of Theta Kappa and Sigma Nu, and the need to make the right yet sometimes very hard and very unpopular decisions for the good of the chapter and fraternity.

**Objective:** To grow a nucleus of members and servant leaders to the chapter and fraternity that will assist in advising and leading the officers of the Chapter, the Theta Kappa collegiate & alumni chapters, the Theta Kappa House Corporation, and the Theta Kappa Alumni Advisory Board for years to come.

## **Points of reflections to pass onto our newest Eminent Commander:**

1. Reflect on the challenges and forward movement of the chapter while you lead Theta Kappa to provide insight and perspective on making the right decision and the positive outcome it lead to.
2. Reflect on another collegiate brother who supported and assist you in your role as commander and the positive direction of the chapter.
3. Reflect on another collegiate brother who supported and assist you in your role as commander and the positive direction of the chapter.
4. Reflect on the experience and impact being commander made on your brotherhood experience, your family, and your career.
5. Reflect on your willingness to mentor and shape our newest leader to avoid past mistakes many of us made, develop a positive leadership ethic, and to sustain the future of the collegiate chapter and our alumni.

## **Some considerations for future events:**

1. The next commander will be named in late November/early December to serve Dec. 2014 to Dec. 2015. The planned date for our next dinner is:
  - Sat., Jan. 17, 2015 (MLK Weekend)
  - 2016: Sat., Jan. 16, 2016; 2017: Sat., Jan. 14, 2017
2. Lt. Commanders? Spouses? A parallel spouse event? Another night of the week? Another venue? Is the price too steep? Another city? Speaker? Homework? How do we increase the value to the group and honoree?



# The Theta Kappa Second Annual Commanders' Dinner

## **2014**

02/01 Celebration of the Red Cup  
02/01 House Opening: 25 Years

04/01 ΣN Month of Service  
04/11 Pilgrimage to HQs/Rock/VMI  
04/12 Spring Blue-White Game  
04/26 2nd Commanders' Dinner  
05/01 Atlanta Honorary Board  
05/06 Theta Kappa Colony's 46th Anniversary  
05/10 Theta Kappa's Founding – 44 Years  
06/10 Atlanta Alumni Dinner  
06/21 Summer AAB Meeting  
08/05 Macon Alumni Dinner  
08/16 First Fall AAB Meeting  
08/18 Savannah Alumni Dinner  
08/18 Fall Semester Classes Begin  
08/30 GSU at NC State  
09/06 GSU vs. Savannah State  
09/09 Atlanta Alumni Dinner  
09/13 GSU at Georgia Tech  
09/13 Sigma Nu Tailgate in ATL  
09/20 GSU at South Alabama  
09/25 GSU at Appalachian State  
09/27 GSU Family Weekend (25-27)  
09/27 Mid Fall AAB Meeting  
10/04 GSU at New Mexico State  
10/11 GSU vs. Idaho  
10/11 GSU Homecoming Weekend  
10/25 GSU at Georgia State  
10/25 Sigma Nu Tailgate in ATL  
10/30 GSU vs. Troy University  
11/01 GA-FL in Jacksonville  
11/08 GSU at Texas State  
11/11 25 Years since the House Dedication  
11/15 GSU at Navy  
11/17 ΘK Founder's Day (1967) – 47 Years  
11/29 GSU vs. University LA-Monroe  
12/09 Atlanta Alumni Dinner

## **2015**

01/01 146th Anniversary of ΣN  
01/17 3rd Commanders' Dinner  
05/06 Theta Kappa Colony– 47 Years  
05/10 Theta Kappa's Founding – 45 Years  
11/17 ΘK Founder's Day (1967) – 48 Years

## **2016**

01/01 Sigma Nu (ΣN) 147th Anniversary  
01/16 4th Commanders' Dinner  
05/06 Theta Kappa Colony – 48 Years  
05/10 Theta Kappa's Founding – 46 Years  
11/01 35th Anniversary of the Black & Gold  
11/14 30 Years since 1986 Alumni Initiation  
11/17 ΘK Founder's Day (1967) – 49 Years

## **2017**

01/01 Sigma Nu (ΣN) 148th Anniversary  
01/14 5th Commanders' Dinner  
05/06 Theta Kappa Colony – 49 Years  
05/10 Theta Kappa's Founding – 47 Years  
11/17 ΘK Founder's Day (1967) – 50 Years

## **2018**

01/01 Sigma Nu (ΣN) 149th Anniversary  
01/13 6th Commanders' Dinner  
05/06 Theta Kappa Colony – 50 Years  
05/10 Theta Kappa's Founding – 48 Years  
11/17 ΘK Founder's Day (1967) – 51 Years

## **2019**

01/01 Sigma Nu (ΣN) 150th Anniversary  
01/19 7th Commanders' Dinner  
05/06 Theta Kappa Colony – 51 Years  
05/10 Theta Kappa's Founding – 49 Years  
11/11 30 Years since the House Dedication  
11/17 ΘK Founder's Day (1967) – 52 Years

## **2020**

01/01 Sigma Nu (ΣN) 151st Anniversary  
01/18 8th Commanders' Dinner  
05/06 Theta Kappa Colony– 52 Years  
05/10 Theta Kappa's Founding – 50 Years  
11/17 ΘK Founder's Day (1967) – 53 Years

Founding Day: November 17, 1967  
Colonization of Chapter: May 6, 1968  
Chapter's Chartering: May 10, 1979  
House Dedication: November 11, 1989





**Sigma Nu Fraternity • Theta Kappa Alumni Advisory Board (AAB) • Georgia Southern University**  
Post Office Box 1697 • Statesboro, GA 30459-1697 • [www.SigmaNuGSU.com](http://www.SigmaNuGSU.com) • [aab@SigmaNuGSU.com](mailto:aab@SigmaNuGSU.com)

	<b>Bill Geddy</b> Chairman, AAB / Co-Chapter Advisor ΘK 219; Past Commander; Division Cdr Macon, GA M: 404-375-9249 / O: 404-913-1411 E: <a href="mailto:Bill@WMe3.com">Bill@WMe3.com</a>		<b>Tony Fair</b> Co-Chapter Advisor / House Advisor ΘK 9; Past Lt. Cdr & Chapter Advisor Statesboro, GA M: 912-682-2082 / O: 912-489-8606 E: <a href="mailto:TFair@AgSouthIII.com">TFair@AgSouthIII.com</a>
	<b>Larry Sands</b> Vice Chairman, AAB / Special Projects ΘK 325 Savannah, GA M: 912-210-7646 E: <a href="mailto:lsands@valleycrest.com">lsands@valleycrest.com</a>		<b>John Austin</b> Risk Reduction & Legal Advisor ΘK 120; Past Commander Sandy Springs, GA M: 678-613-5601 / O: 404-869-0100 E: <a href="mailto:jaustin@austinsparks.com">jaustin@austinsparks.com</a>
	<b>Cecil Christopher</b> Advisor-at-Large / Community Service ΘK 260; Past Treasurer Twin City, GA M: 229-315-0950 E: <a href="mailto:cecil.t.christopher@gmail.com">cecil.t.christopher@gmail.com</a>		<b>Ed Hurst</b> Candidate Advisor; Alumni Lt. Cdr ΘK 280; Past Alumni Commander Loganville, GA M: 770-982-3686 E: <a href="mailto:eghurst@comcast.net">eghurst@comcast.net</a>
	<b>Chris Garretson</b> Academic & LEAD Advisor, Ed.D EP 933 (Michigan State) Hinesville, GA M: 912-977-3443 E: <a href="mailto:gator58@coastalnow.net">gator58@coastalnow.net</a>		<b>Bruce Groberg</b> Advisor-at-Large / Special Projects ΔA 722 (Case-Western Reserve) Savannah, GA M: 914-588-3562 / O: 912-598-7290 E: <a href="mailto:b.groberg@gmail.com">b.groberg@gmail.com</a>
	<b>Jeff Kinlaw</b> Treasurer & Finance Advisor ΘK 282; Past Commander & Treasurer Savannah, GA M: 912-656-1025 E: <a href="mailto:jeffkinlaw@gmail.com">jeffkinlaw@gmail.com</a>		<b>Eric Moore</b> Recruitment & Manpower Advisor ΘK 273; Past Rush Chair & Alum Cdr Dacula, GA M: 404-790-3384 E: <a href="mailto:emoore755@msn.com">emoore755@msn.com</a>
	<b>Brent Myers</b> Advisor-at-Large / Special Projects ΘK 295; Advises House Corporation Gainesville, GA M: 404-803-1536 E: <a href="mailto:be.myers@comcast.net">be.myers@comcast.net</a>		<b>Keith Roughton</b> Faculty Advisor / Academic Advisor ΘK 373; Past Lt. Commander Statesboro, GA M: 912-531-1406 / O: 912-478-0747 E: <a href="mailto:kroughton@gmail.com">kroughton@gmail.com</a>
	<b>Mike Thurman</b> Alumni Mentor Program & Rush ΘK 328; Past Rush Chair/IFC President Smyrna, GA M: 770-876-0475 E: <a href="mailto:mikethurman13@gmail.com">mikethurman13@gmail.com</a>		<b>Evan Winebarger</b> Social/Parent/Lt Commander Advisor ΘK 754, Immediate Past Commander Lilburn, GA M: 770-853-7796 E: <a href="mailto:ew01251@georgiasouthern.edu">ew01251@georgiasouthern.edu</a>
	<b>Eric Degen</b> <b>Collegiate</b> Commander Sophomore, ΘK 811 Canton, GA M: 770-876-9259 E: <a href="mailto:degen555@hotmail.com">degen555@hotmail.com</a>		<b>CJ Deputy</b> <b>Collegiate</b> Lt. Commander Sophomore, ΘK 797 Alpharetta, GA M: 678-467-4549 E: <a href="mailto:cd03817@georgiasouthern.edu">cd03817@georgiasouthern.edu</a>





# Sigma Nu Fraternity – Theta Kappa Alumni Information Sheet

We continue to build our alumni database as part of an overall improvement initiative. Please fill this information out as best as possible as it may assist us in locating other alumni. Please register at [www.SigmaNuGSU.com/register](http://www.SigmaNuGSU.com/register) as well.



## Full Name:

_____	_____	_____
(First Name)	(Middle Name)	(Last Name)
_____	<input type="checkbox"/> Theta Kappa	_____
(Nickname)	(Initiate Chapter & Number)	(Other Sigma Nu Chapter & Initiate #)

**Home Address:** ☐ Home Address / ☐ Other Address / Note: \_\_\_\_\_ Phone: \_\_\_\_\_

Street: \_\_\_\_\_ Mobile: \_\_\_\_\_

City: \_\_\_\_\_ Email: \_\_\_\_\_

State: \_\_\_\_\_ Zip: \_\_\_\_\_ - \_\_\_\_\_ Birth Date: \_\_\_\_\_ / \_\_\_\_\_ / \_\_\_\_\_

**Work Information:** ☐ Work Address / ☐ Other Address / Notes: \_\_\_\_\_ ☐ Home Office ☐ Retired

Company: \_\_\_\_\_ Position: \_\_\_\_\_

Address 1: \_\_\_\_\_ Direct: \_\_\_\_\_

Address 2: \_\_\_\_\_ Office: \_\_\_\_\_

City: \_\_\_\_\_ Fax: \_\_\_\_\_

State: \_\_\_\_\_ Zip: \_\_\_\_\_ - \_\_\_\_\_ Email: \_\_\_\_\_

Assistant or Notes: \_\_\_\_\_ Website: \_\_\_\_\_

**What is your preferred email address for correspondence?** ☐ Home / ☐ Work / ☐ Other: \_\_\_\_\_

**Family Information:** Spouse's Name: \_\_\_\_\_ Anniversary Date (MM/DD/YY): \_\_\_\_\_

Notes: Was your spouse affiliated with: ☐ Sigma Nu (Little Sister/Sweetheart)? / ☐ GSU? / ☐ Sorority: \_\_\_\_\_

Children (w/ages): \_\_\_\_\_

(If you have a son(s) we would like to know their DOBs for legacy tracking)

Parent's Name/Info: \_\_\_\_\_ Phone: \_\_\_\_\_

Street: \_\_\_\_\_ City/ST/Zip: \_\_\_\_\_

(We maintain parent's/permanent address information as another means of finding alumni and prevent them from becoming "lost")

**Chapter Information:** Name of Predecessor Name of Successor

Offices Held: \_\_\_\_\_ Years: \_\_\_\_\_

\_\_\_\_\_ Years: \_\_\_\_\_

Or Alum offices held: \_\_\_\_\_ Years: \_\_\_\_\_

Big Brother: \_\_\_\_\_ ☐ Do you communicate with your Big Brother? ☐ Little Brother(s)?

Little Brother(s): \_\_\_\_\_

Other brother(s) that you maintain a close relationship with? \_\_\_\_\_

**College Information:** Degree/Major: \_\_\_\_\_ Grad Year: \_\_\_\_\_

Sports/Clubs/SGA: \_\_\_\_\_ Graduate Work: \_\_\_\_\_

**News to share:** \_\_\_\_\_

\_\_\_\_\_

Check box for "Yes" answer: Are you Facebook? ☐ / Our Facebook Group? ☐ / Our Linked-In? ☐ / Registered on [www.sigmanugsu.com](http://www.sigmanugsu.com)? ☐

**Please fax to: 404-478-8887 or email to [alumni@sigmanugsu.com](mailto:alumni@sigmanugsu.com).**



## Information about our Alumni Database & where to find us...

Theta Kappa maintains an alumni database in addition to the Sigma Nu Fraternity HQs database. The reason we do this is probably obvious, but worth restating – Sigma Nu has over 200,000 alumni and we have less than 1000; no one needs our chapter alumni information like we do, so we need to manage and look after it like no other can as we connect with our alumni through a variety of sources. We do share updates periodically with the Sigma Nu Fraternity HQs (usually quarterly), so they are getting your updates and your fraternity record is updated.

We have 3 basic sources (we manage) where you can find information, what is going on, and where people are:

- **Facebook** – we have a group called “**Sigma Nu - Georgia Southern - Theta Kappa**”; if you are not already a member consider joining this group so you can keep up with our alumni chapter, brothers, and friends. You can then add members as personal friends and get the normal Facebook updates on them. The site is: <http://www.facebook.com/groups/sigmanugsu/>.
- **Chapter Website** – this is located at [www.sigmanugsu.com](http://www.sigmanugsu.com) (place on your safe list); it is a repository for chapter/alumni information and events. It is basically a tool that puts us on the web that helps us manage chapter and alumni operations beyond Facebook. You can sign up for notifications, search for other alumni, and it has a personal “dashboard” (once you sign in) that gives a snapshot of what is going on.
- **Alumni Database** – this is managed behind the scenes and we use for keeping up with our members, alumni, and friends. We try to incorporate updates we see on Facebook and the website, but the best way to update us is through the enclosed “alumni information update”. We exchange this information and the address information we gather with the Sigma Nu Fraternity HQs staff, so they can update you as well.

If you have question or updates please contact us at [alumni@sigmanugsu.com](mailto:alumni@sigmanugsu.com).

---

## LEAD – Looking for facilitators – consider volunteering!

Our Chapter implemented Sigma Nu’s groundbreaking LEAD (Leadership, Ethics, Achievement, & Development) Program and is excited about the prospects it brings. In order to increase the value to the membership and chapter, they are looking for alumni and faculty facilitators to assist. Several alumni have already volunteered to assist in the development of our young men. In 2011-12 we started utilizing GSU’s City Campus/E-Zone for LEAD which is one of the benefits of being a founding and continuing sponsor of the E-Zone.

### LEAD – Phase 1

- |  |  |
|--|--|
| <input type="checkbox"/> 1. Fraternity                         | <input type="checkbox"/> 7. Ethics                           |
| <input type="checkbox"/> 2. History                            | <input type="checkbox"/> 8. Leadership: The Basics           |
| <input type="checkbox"/> 3. Leadership & Working in Groups     | <input type="checkbox"/> 9. Project Management               |
| <input type="checkbox"/> 4. Sigma Nu Organization & Operations | <input type="checkbox"/> 10. Ritual: The End...The Beginning |
| <input type="checkbox"/> 5. Risk Reduction                     | <input type="checkbox"/> 11. Community Service (Optional)    |
| <input type="checkbox"/> 6. Values                             | <input type="checkbox"/> 12. Time Management (Optional)      |

The LEAD program has prepared facilitator manuals, handouts, audio/visual materials, a web interface, on-line exams/quizzes, and handbooks. For volunteer facilitators there is a website and on-line materials to help you prepare. LEAD Phase 1 is designed for the candidate period; LEAD Phases 2-4 are for follow-on years in school – all designed to prepare members to be better brothers, leaders, citizens, and for the world of work.

For more information on LEAD please visit the chapter website ([www.sigmanugsu.com](http://www.sigmanugsu.com)), Sigma Nu’s LEAD site at <http://www.sigmanu.org/programs/lead/index.php> or [www.sigmanu.org](http://www.sigmanu.org). If you are interested in learning more or possibly facilitating, please fax this to 404-478-8887, email a note to [alumni@sigmanugsu.com](mailto:alumni@sigmanugsu.com), or contact our LEAD Advisor on the AAB, alumnus **Larry Sands, ThK 325**, at 912-210-7646 or [lsands@valleycrest.com](mailto:lsands@valleycrest.com).

- ☐ I am interested in helping with LEAD at GSU!      Name: \_\_\_\_\_
- Email: \_\_\_\_\_      Phone: \_\_\_\_\_





# **“Back to the New Basics”**

## **The chapter improves operations and leadership**

### **Parents’ Call**

Starting with Fall Semester, the chapter began to meet with parents of the candidate class in an introductory conference call right after rush. The purpose is to introduce leaders and advisors, open lines of communications, set expectations, and make commitments.

This practice has been well received and will continue into the future. See the attached “packet” that is sent to parents.

### **Greek Awards/Recognition**

The chapter was recognized for achievement in a number of areas this year. In the Parents’ Packet there is a listing of those awards which we proudly received. We strive to attain the ΣΝ goal of “*Excelling through Honor.*”

### **New Candidate Program**

The chapter re-energized the Theta Kappa candidate program by creating a “positive points model and scoring system” to measure the progress of the candidates. It has also institutionalized LEAD Phase 1 with alumni facilitators. Most recently the chapter manual they developed for this program was added to the Sigma Nu “Best Practices” library.

### **LEAD Phase 2-4 & Risk**

The chapter placed the LEAD Officer and the Sentinel (Risk) on the “Chapter Council” to demonstrate the importance of these roles to the chapter and the future of our fraternity. It followed it up with on-going education around risk management and liability plus the full implementation of the LEAD program.

For more information go to: [www.SigmaNuGSU.com/parents](http://www.SigmaNuGSU.com/parents)  
If you do not belong already, please join our website and Facebook group, where we post frequently.

---

# THETA KAPPA CHAPTER, SIGMA NU FRATERNITY

103 OLYMPIC BOULEVARD, STATESBORO, GA, 30458

---

**TO:** NEW SIGMA NU PARENTS OF THE THETA KAPPA CHAPTER

**FROM:** Tony Fair, Co-Chapter Advisor  
Bill Geddy, Co-Chapter Advisor  
Ed Hurst, Advisor to Marshal  
Jeff Kinlaw, Advisor – Candidate Program  
Keith Roughton, Academic Advisor  
Chris Garretson, Academic Advisor  
Theta Kappa Alumni Advisory Board  
Sigma Nu Fraternity Housing Corp.

**SUBJECT:** INTRODUCTORY CALL FOR PARENTS

**DATE:** FEBRUARY 13, 2014 AT 7:00 PM ET

**CC:** Eric Degen, Theta Kappa Chapter, Commander  
Adam Clay, Theta Kappa Chapter, Marshal

You are invited to participate in a 1 hour conference call meeting of the parents of the newly active members of Theta Kappa Chapter Sigma Nu Fraternity. This call will take place on **Thu., Feb. 13<sup>th</sup> (02/13), at 7:00 pm ET – sharp!** The dial in number and passcode are: **530-881-1212; PC: 672-895-947#**. The agenda:

1. Introduction
2. Brief History of the Fraternity and some basic tenants.
3. The Theta Kappa Chapter (Sigma Nu at GSU)
4. Leadership of the Chapter
5. What we will deliver as a fraternity, chapter and alumni
6. What we ask from the parents
7. Question & answer

This conference call is a first step in helping to establish a stronger bond and means of communication between and among the Active Chapter Leadership, the Alumni Leadership, and the National Organization. We are hopeful that this call (and other events that will follow) will provide you with greater understanding about the Fraternity's goals and objectives and the opportunities that we hope to make available to your son.

We will send out slides or a PDF document beforehand that we will review on the call.

## **THIS IS NOT A FUNDRAISING CALL.**

We are excited about your son's participation in the Fraternity and we look forward to it serving as an important resource in his leadership, academic, and professional development for years to come.

If you have any questions before the call, please do not hesitate to contact Bill Geddy at 404-913-1411 or via email at [Bill@wmc3.com](mailto:Bill@wmc3.com) OR Tony Fair at 912-682-2082 or via email at [TFair@AgSouthIII.com](mailto:TFair@AgSouthIII.com). To learn more about the chapter please go to our website at: [www.SigmaNuGSU.com](http://www.SigmaNuGSU.com) and to learn more about the Theta Kappa Alumni Advisory Board, please go to [www.SigmaNuGSU.com/aab](http://www.SigmaNuGSU.com/aab).

We look forward to your participation on the call. We will start at 7:00 pm ET sharp, so please dial in a few minutes early if possible. We will be completed by 8:00 pm. Thank you in advance for your time!



# BECOME SOMETHING MORE

## BECOME A SIGMA NU

# ΣΝ



---

BROTHERHOOD  
FRIENDSHIP  
DIVERSITY  
SERVICE  
EXCELLENCE  
ATHLETICS  
GROWTH  
LOVE  
HONOR  
TRUTH  
EDUCATION  
RESPECT  
LEADERSHIP  
VITALITY  
PROGRESS  
PROFITABILITY



**Sigma Nu Fraternity • Theta Kappa Alumni Advisory Board (AAB) • Georgia Southern University**  
PO Box 1697 • Statesboro, GA 30459-1697 • [www.SigmaNuGSU.com](http://www.SigmaNuGSU.com) • [aab@SigmaNuGSU.com](mailto:aab@SigmaNuGSU.com)

## **MEMO**

**DATE:** February 11, 2014

**FROM:** Theta Kappa Alumni Advisory Board

**TO:** Parents of Theta Kappa (Sigma Nu) Collegiate Members & Candidates

**SUBJECT:** Welcome to Sigma Nu Fraternity, Theta Kappa Chapter, at Georgia Southern University

Parents of our new Sigma Nu Candidates at GSU...

We are excited about your son's participation in the Fraternity and we look forward to it serving as an important resource in his leadership, academic, and professional development for years to come. Thank you for your willingness to allow your son to join Sigma Nu – something we all see as a further investment in his future. Our commitment to you is to try every day to live up to the commitment you made and the commitment we made as Sigma Nu brothers, alumni, and advisors to these young men.

We, the advisors, and the chapter officers commit to you to the five objects of Sigma Nu Fraternity:

1. **HONOR.** To govern each act by a high sense of honor
2. **FRIENDSHIP.** To bind together all members by ties of true and lasting friendship (brotherhood)
3. **ASSISTANCE.** To protect, assist, advance, and encourage each other by every honorable means
4. **UNITY.** To have plans for guidance and unity in action
5. **COMMUNICATION.** To gather, to propose, discuss and agree upon these plans at meetings

Further we commit to:

6. **NO HAZING** – period! Sigma Nu was founded against hazing in 1869 – that tradition continues.
7. **LEADERSHIP DEVELOPMENT** – provide opportunities for the young men of our chapter to learn, develop, and practice their leadership skills that will serve them the rest of their lives.
8. **EDUCATIONAL ASSET** – we pledge that Sigma Nu will be an academic and educational asset to your son in college and after – not the reverse. It will not be easy, but it will be rewarding.

The members of the chapter and the advisors look forward to meeting you in person in the near future and for your family to become part of the Sigma Nu family. If at any time (24/7) you have a question, an issue, or comment in regards to the fraternity or your son's involvement, please feel free to call us or email us – we will be there!

**Bill Geddy**

Co-Chapter Advisor – Macon, GA  
404-913-1411 (Phone)  
404-375-9249 (Mobile)  
[Bill@WMe3.com](mailto:Bill@WMe3.com) (Email)

**Tony Fair**

Co-Chapter Advisor – Statesboro, GA  
912-682-2082 (Mobile)  
912-489-8606 (Office)  
[TFair@AgSouthIII.com](mailto:TFair@AgSouthIII.com) (Email)

Please register and join our website at: <http://www.sigmanugsu.com/parent-registration>. Our website is located at: [www.SigmaNuGSU.com](http://www.SigmaNuGSU.com). Sigma Nu Fraternity's website is located at: [www.SigmaNu.org](http://www.SigmaNu.org).

We look forward to meeting you and talking to you in the years to come!





Sigma Nu Fraternity • Theta Kappa Alumni Advisory Board (AAB) • Georgia Southern University  
PO Box 1697 • Statesboro, GA 30459-1697 • [www.SigmaNuGSU.com](http://www.SigmaNuGSU.com) • [aab@SigmaNuGSU.com](mailto:aab@SigmaNuGSU.com)

	<b>Bill Geddy</b> Chairman, AAB / Co-Chapter Advisor ΘK 219; Past Commander; Division Cdr Macon, GA M: 404-375-9249 / O: 404-913-1411 E: <a href="mailto:Bill@WMe3.com">Bill@WMe3.com</a>		<b>Tony Fair</b> Co-Chapter Advisor / House Advisor ΘK 9; Past Lt. Cdr & Chapter Advisor Statesboro, GA M: 912-682-2082 / O: 912-489-8606 E: <a href="mailto:TFair@AgSouthIII.com">TFair@AgSouthIII.com</a>
	<b>Larry Sands</b> Vice Chairman, AAB / LEAD Advisor ΘK 325 Savannah, GA M: 912-210-7646 E: <a href="mailto:lsands@valleycrest.com">lsands@valleycrest.com</a>		<b>Ed Hurst</b> Candidate Advisor; Alumni Lt. Cdr ΘK 280; Past Alumni Commander Loganville, GA M: 770-982-3686 E: <a href="mailto:eghurst@comcast.net">eghurst@comcast.net</a>
	<b>John Austin</b> Risk Reduction & Legal Advisor ΘK 120; Past Commander Sandy Springs, GA M: 678-613-5601 / O: 404-869-0100 E: <a href="mailto:jaustin@austinsparks.com">jaustin@austinsparks.com</a>		<b>Chris Garretson</b> Academic & Scholastic Advisor, Ed.D EP 933 (Michigan State) Hinesville, GA M: 912-977-3443 E: <a href="mailto:gator58@coastalnow.net">gator58@coastalnow.net</a>
	<b>Bruce Groberg</b> Treasurer & Finance Advisor ΔA 722 (Case-Western Reserve) Savannah, GA M: 914-588-3562 / O: 912-598-7290 E: <a href="mailto:b.groberg@gmail.com">b.groberg@gmail.com</a>		<b>Jeff Kinlaw</b> Candidate & LEAD Advisory Team ΘK 282; Past Commander & Treasurer Savannah, GA M: 912-656-1025 E: <a href="mailto:jeffkinlaw@gmail.com">jeffkinlaw@gmail.com</a>
	<b>Eric Moore</b> Recruitment & Manpower Advisor ΘK 273; Past Rush Chair & Alum Cdr Dacula, GA M: 404-790-3384 E: <a href="mailto:emoore755@msn.com">emoore755@msn.com</a>		<b>Brent Myers</b> Advisor-at-Large ΘK 295; Advises House Corporation Gainesville, GA M: 404-803-1536 E: <a href="mailto:be.myers@comcast.net">be.myers@comcast.net</a>
	<b>Keith Roughton</b> Faculty Advisor / Academic Advisor ΘK 373; Past Lt. Commander Statesboro, GA M: 912-531-1406 / O: 912-478-0747 E: <a href="mailto:kroughton@gmail.com">kroughton@gmail.com</a>		<b>Mike Thurman</b> Alumni Mentor Program & Rush ΘK 328; Past Rush Chair/IFC President Smyrna, GA M: 770-876-0475 E: <a href="mailto:mikethurman13@gmail.com">mikethurman13@gmail.com</a>
	<b>Evan Winebarger</b> Social & Parent's Advisor ΘK 754, Immediate Past Commander Lilburn, GA M: 770-853-7796 E: <a href="mailto:ew01251@georgiasouthern.edu">ew01251@georgiasouthern.edu</a>		<b>Eric Degen</b> <b>Collegiate</b> Commander Sophomore, ΘK 811 Canton, GA M: 770-876-9259 E: <a href="mailto:degen555@hotmail.com">degen555@hotmail.com</a>
	<b>CJ Deputy</b> <b>Collegiate</b> Lt. Commander Sophomore, ΘK 797 Alpharetta, GA M: 678-467-4549 E: <a href="mailto:cd03817@georgiasouthern.edu">cd03817@georgiasouthern.edu</a>		<b>Adam Clay</b> <b>Collegiate</b> Marshal, IFC Vice President Sophomore, ΘK 810 Statesboro, GA M: 912-536-1928 E: <a href="mailto:aclay10@hotmail.com">aclay10@hotmail.com</a>

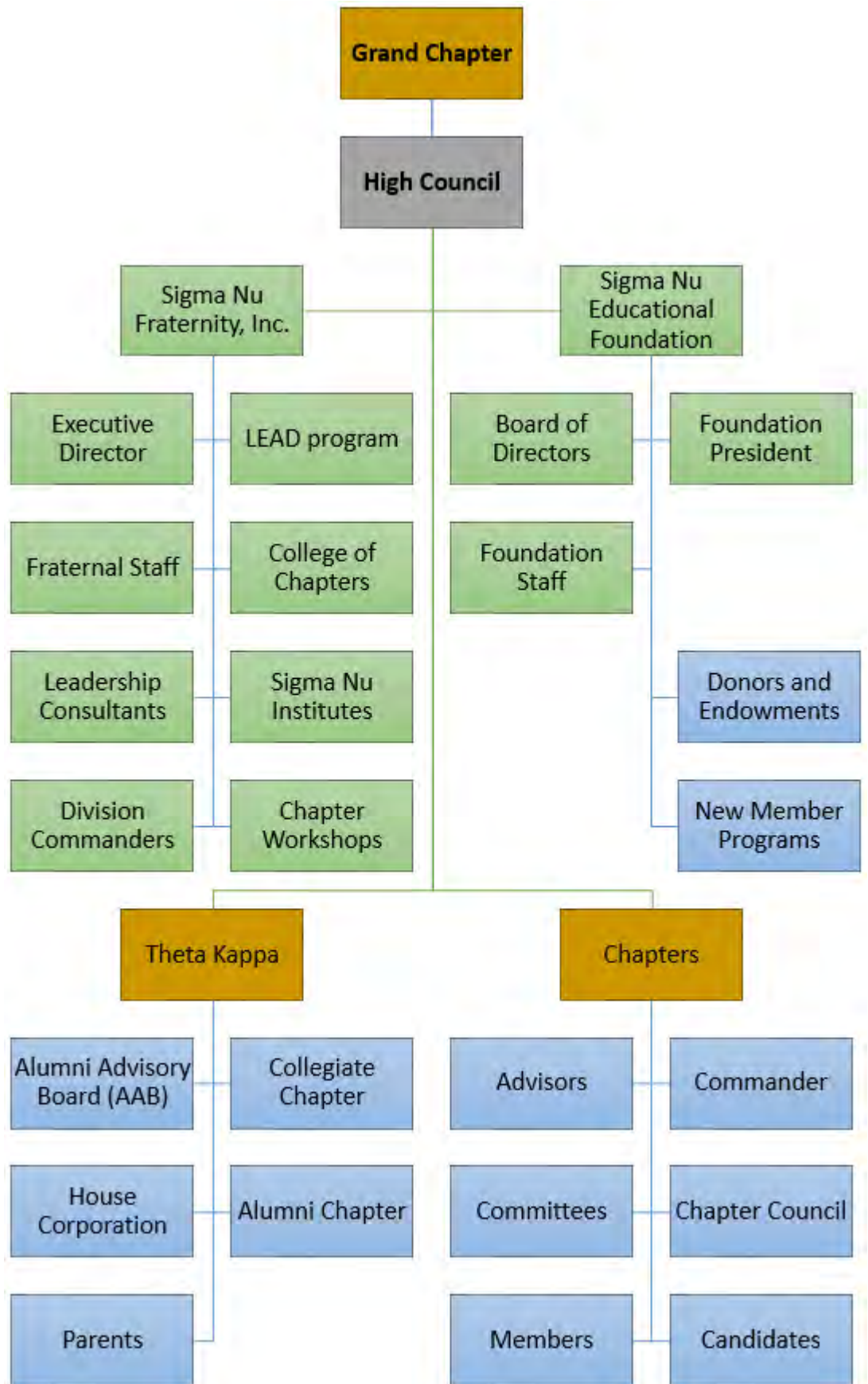


1869

ΣΝ

ΘΚ

1970













## Performing arts, literature, and media

Bob Barker	Epsilon Beta	Drury University	Emmy-winning host of "The Price is Right" game show since 1972; has served as emcee for Miss Universe and Rose Bowl parade
Joe Buck	Beta Eta	Indiana University	Sportscaster on FOX television network
Harrison Ford	Zeta Tau	Ripon College	Starred in some of the most successful films ever made, including Star Wars, The Empire Strikes Back, Indiana Jones and the Temple of Doom, and The Fugitive. Also the 1985 Oscar best actor nominee for Witness
Zane Grey	Beta Rho	University of Pennsylvania	Western novelist (Riders of the Purple Sage)
Tom Johnson	Mu	University of Georgia	President of CNN; has also served as President and CEO of the Los Angeles Times.
William Inge	Nu	University of Kansas	Noted poet and playwright. Earned a Pulitzer Prize for Drama in 1953 for his play Picnic. Also won an Academy Award for Writing Original Screenplay in 1961 for The Dark at the Top of the Stairs.
Al Michaels	Zeta Upsilon Eta Kappa	Arizona State University San Diego State University	Play by play sportscaster for NBC's Sunday Night Football; formerly announced ABC's Monday Night Football from 1986 until it ended in 2005; one of only two men to have broadcasted for the championships of the four major American pro sports (NFL, MLB, NBA, NHL)
Glenn Miller	Gamma Kappa	University of Colorado at Boulder	Leader of the Glenn Miller Orchestra, received the GRAMMY Hall of Fame Award in 1983 (In the Mood) and 1991 (Moonlight Serenade)
Paul Rudd	Nu	University of Kansas	Actor in films such as Anchorman, The 40 Year Old Virgin, Clueless, and The Shape of Things
Tom Poston	Epsilon	Bethany College	Won 1959 Emmy as best supporting actor in a comedy series for The Steve Allen Show. Featured in To Tell the Truth, Mork and Mindy, and Newhart. He received best supporting actor Emmy nominations in 1984, 1986, and 1987.

## Political figures

Lloyd Bentsen	Upsilon	University of Texas at Austin	Former Senator from Texas, Vice Presidential candidate in 1988, and former Secretary of the Treasury
Quentin N. Burdick	Gamma Tau	University of Minnesota, Twin Cities	D — North Dakota
Alan Cranston	Beta Chi	Stanford University	D — California
Tom Coburn	Epsilon Epsilon	Oklahoma State University - Stillwater	R — Oklahoma
Norm Dicks	Gamma Chi	University of Washington	Member of the United States House of Representatives (1976–present) (D — Washington)
Walter F. George	Eta	Mercer University	D — Georgia
Jim Gibbons	Delta Xi	University of Nevada, Reno	Current Nevada Governor
Bob Graham	Epsilon Zeta	University of Florida	Governor of Florida (1978–1986); U.S. Senator (1986–2005) (D — Florida)
Clifford P. Hansen	Epsilon Delta	University of Wyoming	R — Wyoming
Trent Lott	Epsilon Xi	University of Mississippi	Senate Republican Whip (R — Mississippi)
James A. McClure	Delta Omicron	University of Idaho	R — Idaho

George J. Mitchell	Delta Psi	Bowdoin College	Former Senate majority leader and past chairman of The Walt Disney Company
Jody Powell	Eta Gamma	Georgia State University	President Carter's Press secretary
Steve Symms	Delta Omicron	University of Idaho	R — Idaho
Eugene Talmadge	Mu	University of Georgia	Governor of Georgia (1933–1937 and 1941–1943; elected in 1946 but did not serve
Herman E. Talmadge	Mu	University of Georgia	Governor of Georgia (1949–1955); U.S. Senator (1957–1981) (D — Georgia)
<b>Sports figures</b>			
Paul "Bear" Bryant	Theta	University of Alabama	Coached several college football teams (most notably, his alma mater Alabama) for a career record of 323-85-17
Bobby Dodd	Epsilon Eta	University of Tennessee	Coached Georgia Tech football team to 165-64-8 record; All-American quarterback for Tennessee; one of only two men in the College Football Hall of Fame as both a coach and a player
Dick Howser	Zeta Zeta	Florida State University	American League Rookie of the Year in 1961; managed the Kansas City Royals to first World Series title
Archie Manning	Epsilon Xi	University of Mississippi	Professional quarterback for the New Orleans Saints
Eli Manning	Epsilon Xi	University of Mississippi	Professional quarterback for the New York Giants
Pat Riley	Gamma Iota	University of Kentucky	NBA head coach for Los Angeles Lakers, New York Knicks, and currently the Miami Heat; served as head coach for five NBA championship teams, and as a player or assistant coach on two more
Bill Yoast	Eta	Mercer University	Coach portrayed in Remember the Titans
<b>Other famous members</b>			
Daniel Amos	Mu	University of Georgia	CEO of AFLAC Insurance
Vance Brand	Gamma Kappa	University of Colorado at Boulder	Astronaut — flew on ASTP, commander of STS-5 and STS-41B
Ronald Evans	Nu	University of Kansas	NASA astronaut and Pathfinder to the Stars who piloted Apollo 17
Don Malarkey	Gamma Zeta	University of Oregon	Member of Easy Company of the 101st Airborne Division during World War II and is prominently featured in the Steven Ambrose book Band of Brothers which was made into a very popular HBO mini series.
Johnny L Morris	Epsilon Beta	Drury University	Founder and Owner of Bass Pro Shops outdoor retailer
Charles R. Schwab	Beta Chi	Stanford University	Founder, Chairman and CEO of Charles Schwab Corporation Retail Stock Brokerage
General Paul Tibbets	Epsilon Zeta	University of Florida	Pilot of the Enola Gay, the plane that dropped the first atomic bomb used in warfare on Hiroshima in 1945
Don Tyson	Gamma Upsilon	University of Arkansas - Fayetteville	Chairman of Tyson Foods







## Sigma Nu Fraternity – Theta Kappa Chapter (#171) 2013-14 Officer Transition & Installation



Outgoing Commander (#43), **Evan P. Winebarger, ΘK 754**, a senior from Lilburn GA, installs and passes the gavel to Incoming Commander (#44), **Eric D. Degen, ΘK 811**, a sophomore from Canton GA. Thank you and best wishes to Evan! Congratulations and best wishes to Eric!



Outgoing Chapter Council (L to R): Adam Clay (ΘK 810, Recruitment Officer), Carlos Robelo (ΘK 758, Treasurer), Tyler Schulte (ΘK 718, Lt. Commander), Evan Winebarger (ΘK 754, Eminent Commander), Brian Griffin (ΘK 759, LEAD Officer), CJ Deputy (ΘK 797, Marshal), and Anderson Johnson (ΘK 798, Sentinel). Congratulations to this team and the entire chapter for a great semester! Thank you and best wishes to an outstanding and successful officer leadership team.



Incoming Officers (L to R): Nick Efird (ΘK 819, LEAD Officer\*), Adam Clay (ΘK 810, Marshal\*), Ryan Nay (ΘK 819, Treasurer\*), Eric D. Degen (ΘK 811, Eminent Commander\*), CJ Deputy (ΘK 797, Lt. Commander\*), Jon Gilbert (ΘK 819, Sentinel\*), Anderson Johnson (ΘK 798, Chaplain), Josh Calhoun (ΘK 804, Recorder), Brandon Entrekin (ΘK 811, Social Chairman), and Justin Mahler (ΘK 759, Recruitment Officer\*). Congratulations to this entire team on their new positions of leadership at the Theta Kappa Chapter; best wishes for a successful and outstanding year. (\*Indicates Chapter Council.)

Sunday, December 8, 2013





**Georgia Southern Officer of Fraternity & Sorority Relations  
Sigma Nu Fraternity – Theta Kappa Chapter (#171)  
Fall 2013 GSU Greek Awards**



**Theta Kappa Awards**

4 Star Chapter,  
Campus Involvement,  
Public Relations,  
Most Improved GPA

**Spring 2013 Awards**

Outstanding Charitable  
Fundraiser,  
Top Fundraiser GSU  
Relay for Life

The GSU Greek Awards before being handed out at Fall 2013 Greek Awards Banquet.



Council members at the Greek Awards (L to R): Anderson Johnson (ΘK 798, Sentinel), CJ Deputy (ΘK 797, Marshal), Adam Clay (ΘK 810, Recruitment Officer), Brian Griffin (ΘK 759, LEAD Officer), and Carlos Robelo (ΘK 758, Treasurer). Not pictured: Tyler Schulte (ΘK 718, Lt. Commander) and Evan Winebarger (ΘK 754, Commander). Congratulations to the entire chapter for a great semester!



**Campus Recognition**

**Adam Clay** (ΘK 810, new Marshal) is sworn in as IFC VP for Recruitment for 2013-14. Adam just completed his first office as the Recruitment Officer for ΘK.

Theta Kappa captures 4 awards at GSU Greek Awards Banquet on Thu., Nov. 21<sup>st</sup>.

The Chapter adds these awards to the GSU Leadership Award for Outstanding Charitable Fundraiser and Top Fundraiser for the GSU Relay for Life in Apr-May 2013.



**Thursday, November 21, 2013**



# L

## Leadership

# E

## Ethics

# A

## Achievement

# D

## Development



## LEAD PROGRAM: INTRODUCTION DEFINITIONS

### DEFINITIONS

#### THE MISSION OF SIGMA NU FRATERNITY, INC.

*To develop ethical leaders inspired by the principles of Love, Honor and Truth.*

*To foster the personal growth of each man's mind, heart and character.*

*To perpetuate lifelong friendships and commitment to the Fraternity.*

#### THE VISION OF SIGMA NU FRATERNITY, INC.

*Excelling with Honor*

The words **Leadership**, **Ethics**, **Achievement** and **Development** all have a special meaning in this program.

**Leadership** means having a vision, a sense of direction. It also means being able to focus that direction on special ways to get you there. It includes helping others to have influence, power and initiative to support making the "trip" successful.

**Ethics** for us means putting Love, Honor and Truth into practice in every aspect of our life.

**Achievement** includes setting high standards of excellence for one's own performance, being strongly motivated through personal goals and wanting feedback to correct the course of our endeavors.

**Development** has the special meaning of commitment to continuing improvement for self, others, chapter and the General Fraternity. We may not be perfect, but we should strive to reach our fullest potential.



LEAD is Sigma Nu's award-winning ethical leadership development program. In alignment with Sigma Nu's continuing efforts "To develop ethical leaders..." we offer the LEAD Program as a tool to assist our membership in both gaining the knowledge and developing the skills and abilities needed to be an effective and ethical leader for life.

The LEAD Program is a comprehensive ethical leadership development program designed to ensure participants "learn by doing." We encourage all our collegiate chapters to utilize our LEAD Program to the fullest extent possible.

This section is a compilation of all the information and resources needed to fully implement our LEAD Program. Whether you are a collegiate member with a specific question about a specific session, an alumnus interested in going through the online sessions, a guest facilitator looking for session materials or parent just looking to become more involved with the Fraternity, this is a great place to start.

Similar to Sigma Nu's *Digital Delta*, the online component of the LEAD Program is an interactive, self-paced experience designed to meet the unique needs and learning styles of our collegiate members.

For the past several months we have been working to update and redesign the presentation of Phases I-IV of the LEAD Program. This redesign was undertaken to improve the quality and impact of the membership development experiences and opportunities provided to our membership.

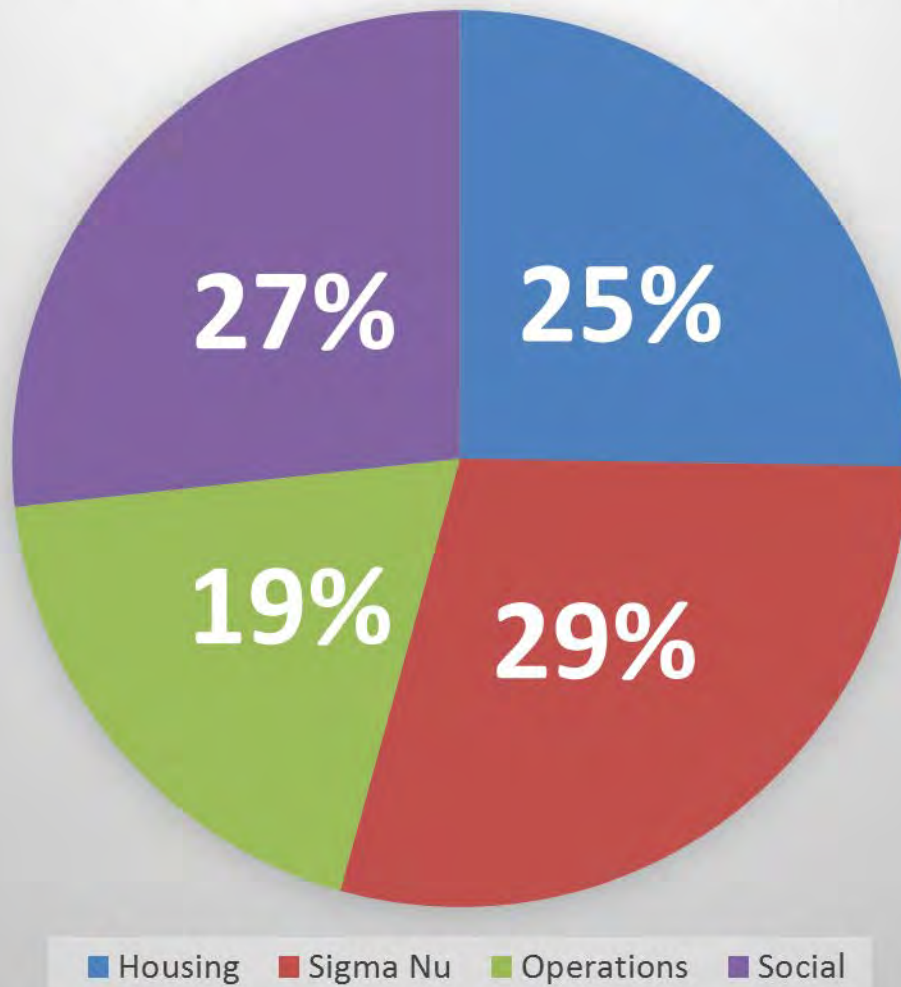
The redesigned presentation of the LEAD Program breaks sessions into two (2) equally important and distinctive components.



1. **Online portion:** Accessed via the Members Area and completed by students on an individual basis. Participants login and complete the online portion of each session prior to attending the facilitation. During the online portion, participants engage the session content in an interactive format that includes videos, audio voiceovers, activities, handouts, journaling exercises and quizzes.
  - Participants print all relevant handouts from the online portion to bring to the facilitated portion.
  - Completing this portion of the session provides a knowledge base that the participants relate to and build upon in the facilitated portion.
2. **Facilitated portion:** Completed in a workshop/discussion setting which is attended by all phase participants. Participants attend the facilitated portion of the session. This should be scheduled and announced in advance to allow time for participants to engage the online portion of the session.
  - Completion of the online portion builds a base of knowledge from which participants can relate to the interactive, hands-on, and application approach of the facilitated portion.



## Sigma Nu (GSU) Dues - Where do they go?



- Sigma Nu Fees:
  - Candidate Fee: \$90 (one time, life)
  - Initiation Fee: \$220 (one time, life)
  - Initiate Dues: \$62.50/brother/semester
  - RMA: \$80-\$180/semester/member (Fall Higher)
  - Conclave savings: \$1,250/semester
- House Fees & Expenses:
  - Parlor Fee: \$60/semester/man (likely increasing)
  - Room Rent per Semester:
    - \$2,000/single occupancy/semester
    - \$1,250/double occupancy/semester
    - Utilities are separate – paid by chapter & occupants
- Our dues are: \$750/semester based on chapter budget.
  - Summer dues vary based on needs and the budget.



# 5 QUESTIONS

## Vice Regent John Hearn (Georgia)

### 1 What is ethical leadership?

Ethical leadership is motivating a group of individuals to achieve a noble goal through honorable means.

### 2 What are the characteristics shared by excellent chapter officers?

The officers with whom I've worked who have had the most success are those who lead by example with vision and courage. They set a noble vision – one that's honorable and begins with the end in mind. They communicate it relentlessly and, in the process, develop followership with others to help accomplish the goals. These inspiring leaders establish a "soft-accountability" culture and they cordially follow through on the commitments of others, seeking respect rather than popularity. Through these things – leading with vision and courage – they'll achieve mutually developed and agreed upon outcomes.

### 3 How can fraternities stay relevant over the next ten years and beyond?

If you were to poll every fraternity in the U.S. about why someone should join their organization, the vast majority of those individuals would use the term "brotherhood" in their answer. Brotherhood is absolutely something we want to embrace and foster; however, our message must be broader. People "buy" differences, and we must show how we are uniquely relevant in the 21st Century. We must articulate Sigma Nu's value proposition as providing an unparalleled return on investment. We must provide examples of

the life skill and leadership development opportunities offered by Sigma Nu. We must focus on our rich heritage and, more importantly, why our future is brightest. And, yes, we must share personal stories of our brotherhood, one that is uniquely, a brotherhood for life.

### 4 What advice would you offer to a collegiate member trying to eliminate hazing in his chapter?

Hazing is incongruent with the founding of Sigma Nu Fraternity. The first decision a newly elected young leader must make is whether or not they are going to tolerate what is dishonorable. That decision-of-the-mind should then be bolstered by a buy-in from the executive committee. Once the leadership has adopted that principal, everyone will need to lead with courage to stop the behavior. Finally, don't be afraid to leverage the resources from alumni – one who has been in your shoes and is willing to be the heavy hand. Stopping less than honorable activities all starts with one brave person – one willing to say, "We're not going to do this."

### 5 Any additional advice for chapter officers?

A chapter has 100% turnover every four years, thus no chapter is ever more than four years away from success or four years away from failure. Chapters must remain focused on that dynamic to ensure sustainability. Leverage in this area often comes from recognizing you can't do everything by yourself. Empowering future leaders with responsibilities helps ensure no vacuum is left following your transition out of



office. A best practice learned in our work on Task Force Hopkins involved developing a robust committee system. Placing younger members on these committees allows them to witness first-hand how to do things well. As they learn, they'll be ready to carry on the success of the chapter, and the positive cycle will repeat itself. While not always recognized as such, operational sustainability is among a chapter officer's most important legacies. Another piece of advice for incoming officers is to run your meetings in the following fashion:

- 1) Establish an agenda for every meeting.
- 2) Establish a timeline for the meeting.
- 3) End each meeting with a summary of the action items discussed, who is responsible for each action item, and the date each item will be accomplished.

The subsequent meeting should include a status review of the previously made commitments from the team. Leaders who follow this simple process will better accomplish goals, empower others and achieve a great deal during their term. \*



## Sigma Nu Fraternity, Inc.

I, \_\_\_\_\_ (name) of the Theta Kappa Chapter of Sigma Nu Fraternity, on my Honor as a Knight and a Gentleman, do solemnly swear to abide by and uphold The Law of Sigma Nu Fraternity, Inc., the *Risk Reduction Policy and Guidelines*, The Ritual, the chapter bylaws, and the directives of the Grand and General Officers of the Fraternity. Further, I will:

1. Respect the dignity of all persons; therefore, I will not physically, psychologically or sexually abuse or haze any human being.
2. Protect the health and safety of all human beings.
3. Respect my property and the property of others; therefore, I will neither abuse nor tolerate the abuse of property.
4. Meet my financial obligations in accordance with The Law of Sigma Nu Fraternity Inc.
5. Neither use nor support the use of illegal drugs; I will neither abuse nor support the abuse of alcohol.
6. Fully support Sigma Nu Fraternity Inc's *Risk Reduction Policy and Guidelines*.
7. Acknowledge that a clean and attractive environment is essential to both physical and mental health; therefore I will do all within my power to see that the chapter's property is well maintained and cleaned.
8. Confront all of my Fraternity Brothers who violate these fundamental obligations and promise to report violations to the appropriate officers of the Fraternity.
9. Abide by the rules and policies of Georgia Southern University.

I am committed to the ideals of Sigma Nu Fraternity, and I fully realize and understand that my continued association and membership in the Theta Kappa Chapter depends upon my deeds. I also realize that my own violations of the principles, ideals, and this agreement will subject me to suspension and/or expulsion from the Theta Kappa Chapter of Sigma Nu Fraternity.

(Signature) \_\_\_\_\_

(Print Name) \_\_\_\_\_

(Date) \_\_\_\_\_

(Witness) \_\_\_\_\_







# **Congratulations!**

**To our newest brothers and knights of Sigma Nu.  
Saturday, April 12, 2014 • Lexington, VA**

John B. Harrison (John), ΘK 833, Roswell GA  
Bryan N. Taylor (Bryan), ΘK 834, Alpharetta GA  
Mitchell G. Portwood (Grant), ΘK 835, Roswell GA  
John E. Gee (John), ΘK 836, Jefferson GA  
Taylor A. Harris (Taylor), ΘK 837, Alpharetta GA  
Ryan M. Wendt (Ryan), ΘK 838, Kennesaw GA  
Dylan Holloway (Dylan), ΘK 839, Tifton GA  
Nicholas Masters (Nick), ΘK 840, Woodstock GA



For more information go to: [www.SigmaNuGSU.com/new-brothers](http://www.SigmaNuGSU.com/new-brothers)